

 **Lutheran Family Services**
of Nebraska, Inc. www.lfsneb.org



Infant Adoption Information

Schedule a time to meet with our Adoption staff to learn about the adoption process through Lutheran Family Services. The meetings are:

- Informal
- Informational
- One-hour long
- Filled with answers to your questions

Omaha: (402) 661-7100 or (800) 267-9876
124 South 24th Street, Suite 200
Omaha, NE 68102

Lincoln: (402) 435-2909
2900 O Street, Suite 200
Lincoln, NE 68510

Lexington: (308) 324-6223
200 West 7th Street, Box 3
Lexington, NE

Council Bluffs: (712) 242-1040
300 W. Broadway, Suite 7
Council Bluffs, IA 51503

E-mail address: adoption@lfsneb.org

Our Adoption Program

Lutheran Family Services of Nebraska, Inc. offers its adoption services throughout the state in support of individuals and couples who have chosen to build their family through adoption. Education about adoption issues and preparation for parenting adopted children are fundamental to all of the Lutheran Family Services of Nebraska adoption opportunities.

The following services are available to Nebraska families:

1. Agency Adoption

This option is available to families who have met the eligibility requirements of Lutheran Family Services. After completion of the homestudy and the educational preparation process, each family provides information profiles, which are then shown to prospective birthparents that are planning for adoption. LFS strives to maintain a pool of 10-15 families waiting for placement. The Agency provides ongoing counseling for both birthparents and the adoptive family, in addition to facilitating the relinquishment and placement of the child.

The Agency Adoption Program prepares families for full openness in adoptions. Prospective adoptive couples pursuing closed or semiclosed placements may participate in all other adoption opportunities.

2. International Adoption

Lutheran Family Services works with sister agencies through the Lutheran Adoption Network (LAN) or an agency of your choice to provide international adoptive placements. Children from infants to teens in countries such as China, Russia, Philippines, Guatemala and many others need adoptive families. Eligibility requirements and fees vary and may include older couples and single applicants. Lutheran Family Services provides the homestudy and educational preparation and facilitates working with the placing agency in preparing the required dossier, identifying a child or children. Post placement supervision is also provided.

3. Identified Adoption

This option involves birthparents and adoptive families who have established an agreement for placement independently of Lutheran Family Services of Nebraska. In such instances the Agency provides the requested counseling to both the birthparents and the adoptive family in addition to facilitating the relinquishment and placement of the child.

4. Contractual Homestudy for Domestic

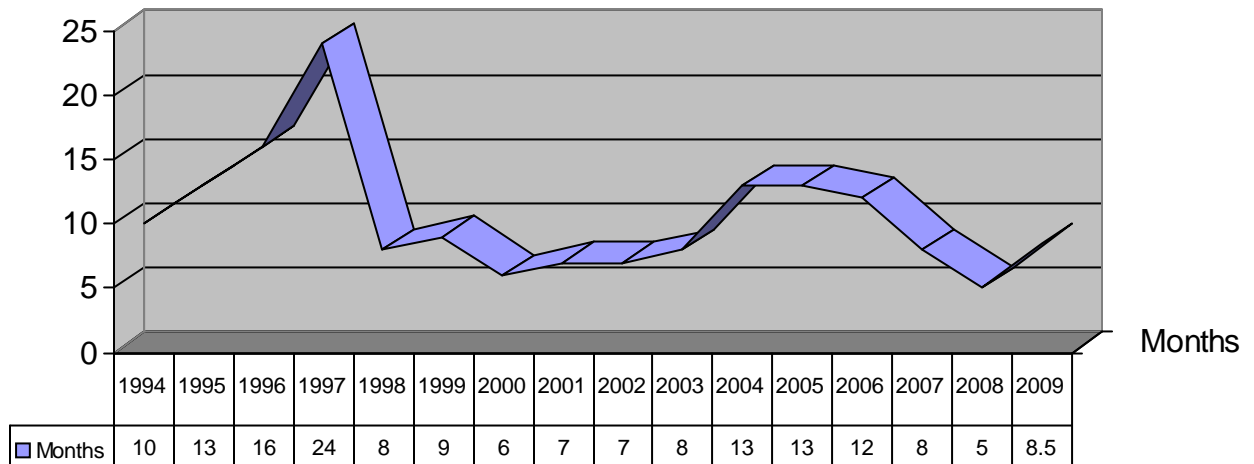
Nebraska law requires that a licensed child-placing agency complete a study of prospective adoptive homes prior to the placement of a child. This homestudy service is available to families pursuing adoption independent of Lutheran Family Services. Lutheran Family Services of Nebraska provides the required homestudy report as well as post-placement supervision.

5. Adoption of Older Children

Lutheran Family Services of Nebraska, Inc. works in collaboration with the Nebraska Department of Health and Human Services to find permanent homes for children who are state wards and who are legally free for adoption.

How Long Does it Take?

Average time families waited for placement after homestudy was completed:



How Many Adoptions Are Done Per Year?

	1996	1997	1998	1999	2000	2001	2002	2003	2004	2005	2006	2007	2008	2009
Total Adoptions	14	12	14	6	14	15	8	12	7	11	13	14	13	13
Agency	12	8	9	4	8	9	6	10	4	8	11	11	8	8
Identified	2	4	5	2	6	6	2	2	3	3	2	3	5	5

How Much Does it Cost?

Homestudy and Adoption Education	\$ 5,000
Due at the Time of Child Placement	\$ 6,100
Post-Placement Supervisions	\$ 1,000
Total Fee for Agency Adoption	\$12,100

Who is Eligible?

1. Married or adult single persons
2. Active members of a Christian Church in the community of family residence
3. Residents of Nebraska (unless military) or residents of Pottawattamie County in Iowa
4. Married at least two years
5. Must have major medical insurance
6. At least 21 years of age and under 45 years of age
7. Must not be pregnant or actively seeking fertility treatment

Where Do We Go From Here?

Step 1: The prospective adoptive family makes an inquiry call to Lutheran Family Services or consults the LFS web site (www.lfsneb.org) regarding adoption. This informational packet is sent to the prospective adoptive family. Families call the office nearest them to schedule to have an individual informational meeting with an adoption therapist.

Step 2: The family attends an informational meeting in the LFS adoption office nearest their home. Details of all aspects of agency adoptions are discussed, and families are encouraged to begin educating themselves about adoption issues through reading and making contact with families in open adoptions.

Step 3: The family returns a short application to the LFS adoption program. The family will then be invited to begin the homestudy process, or to consider re-applying to the program at a later time. The adoption program attempts to have a pool of prospective adoptive families that is varied with regards to demographics. A decision to invite families to begin the homestudy process is based upon the current needs of the adoption program.

Adoptive Parent Reference List

These are adoptive parents living open adoption who have agreed to be available to prospective adoptive parents as a reference for Lutheran Family Services.

Chris and Tracy Tonniges

Geneva, NE
(402) 759-3520

Mitchell and Tammy Homolka

Crete, NE
(402) 826-9098

Mark and Stacey Groetzinger

Aurora, NE
(402) 694-5224

Terry and Carolyn Baca

North Platte, NE
(308) 534-0123

Alan and Lisa Schrier

Omaha, NE
(402) 933-2892

Kevin and Jacalyn Kalsbeck

Kearney, NE
(308) 237-4486

Kurt and Michelle Holmstrom

Omaha, NE
(402) 571-9140

Dean and Tara Schwartz

Lincoln, NE
(402) 363-2107

Publications

THE OPEN ADOPTION EXPERIENCE by Lois Melina and Sharon Roszia; HarperCollins Publishers, NY (1993).

THE SPIRIT OF OPEN ADOPTION by James L.Gritter; CWLA Press, Washington D.C. (1997).

CHILDREN OF OPEN ADOPTION by Kathleen Silber and Patricia Dorner; Corona Publishing Co. San Antonio (1989).

BEING ADOPTED: THE LIFELONG SEARCH FOR SELF by David Brodzinsky, Marshall Schechter, and Robin Marantz Henig, Doubleday, NY (1992).

RAISING ADOPTED CHILDREN by Lois Melina, Harper & Row Publishers, NY, (1986).

THE FAMILY OF ADOPTION by Joyce Maguire Pavao; Beacon Press, Boston (1998).

A LETTER TO ADOPTIVE PARENTS ON OPEN ADOPTION by Randolph Severson, House of Tomorrow Productions, Dallas, TX (1993)

THE STORY OF DAVID by Dion Howells; Delacorte Press Publishers, NY (1997).

REAL PARENTS & REAL CHILDREN by Holly Van Gulden and Lisa M. Bartels-Rabb; Crossroad Publishing, NY (1995).

THE PRIMAL WOUND by Nancy Verrier, Gateway Press Publishing Co., Maryland (1993).

ADOPTIVE FAMILIES MAGAZINE

3333 Highway 100 North
Minneapolis, MN 55422
1(800)372-3300
www.adoptivfam.com